

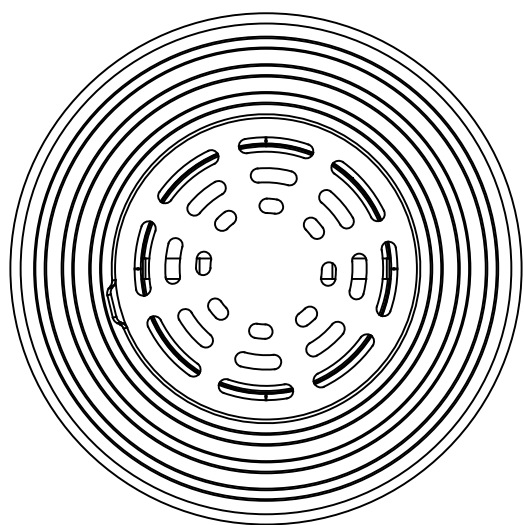
500/670, 40 t
Screen structure for traffic deck

LT-04

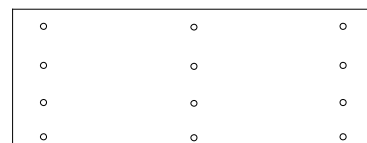
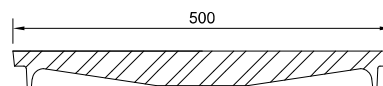
Date
26.1.2026

Scale
1:10

PELTITARVIKE

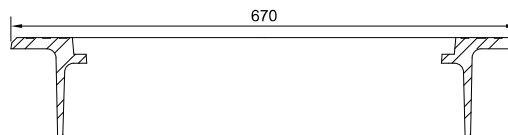


Cast-iron grate Ø500 mm
Load capacity 40 t



Sand bucket

Cast-iron frame Ø670 mm
Load capacity 40 t



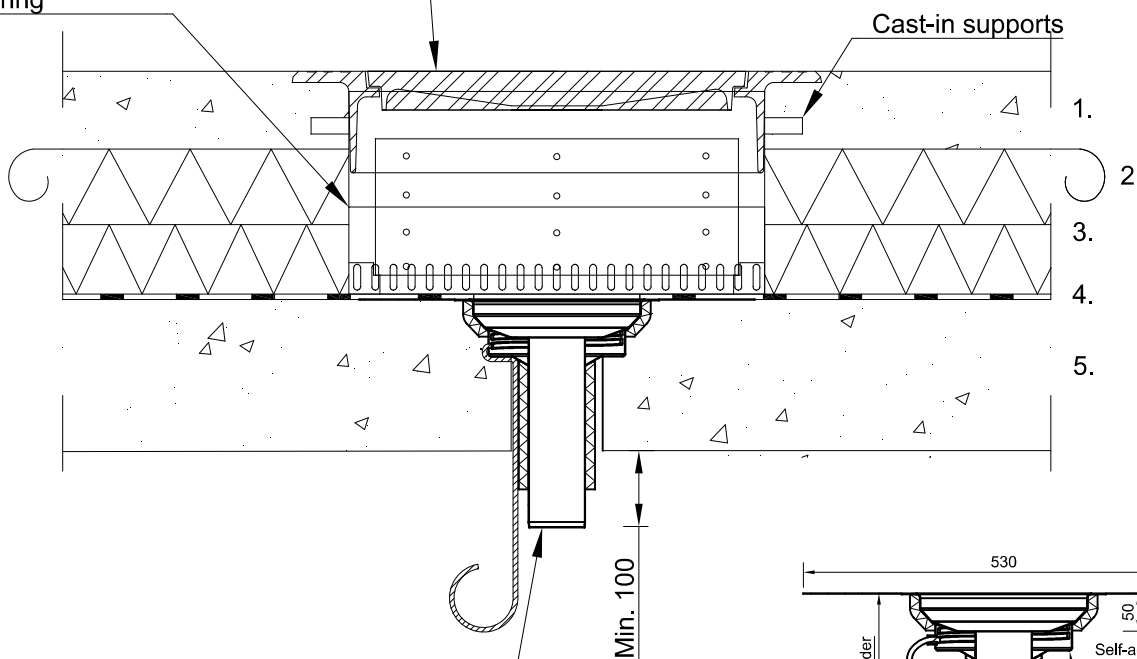
670



220
550

500/670
H = made to order,
acid-resistant

Height adjustment
with adjustable extension ring
Openings at the bottom
of the extension ring



Cast-in supports

1.

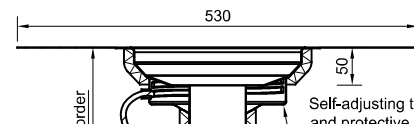
2.

3.

4.

5.

Min. 100



Self-adjusting thermocable and protective cup

Condensation insulation

Ø75mm, Ø110mm,
Ø160mm

Connection cable for
thermocable, standard lengths:
2 m, 3 m, 5 m, 10 m, 15 m, 20

KK Ø/X mm, acid-resistant steel
Accessories: Thermocable (16W or
32W) and condensation insulation

1. Reinforced concrete slab according to structural plan.
2. Geotextile according to structural plan.
3. Thermal insulation according to structural plan.
4. Waterproofing according to structural plan.
5. Load-bearing structure according to structural plan.

Order/quote Peltitarvike Oy
Myynti@peltitarvike.fi, +358 20 741 2770

1 pc KK Ø/X mm, thermocable and condensation
insulation
1 pc Screen structure 500/670, H = made to order